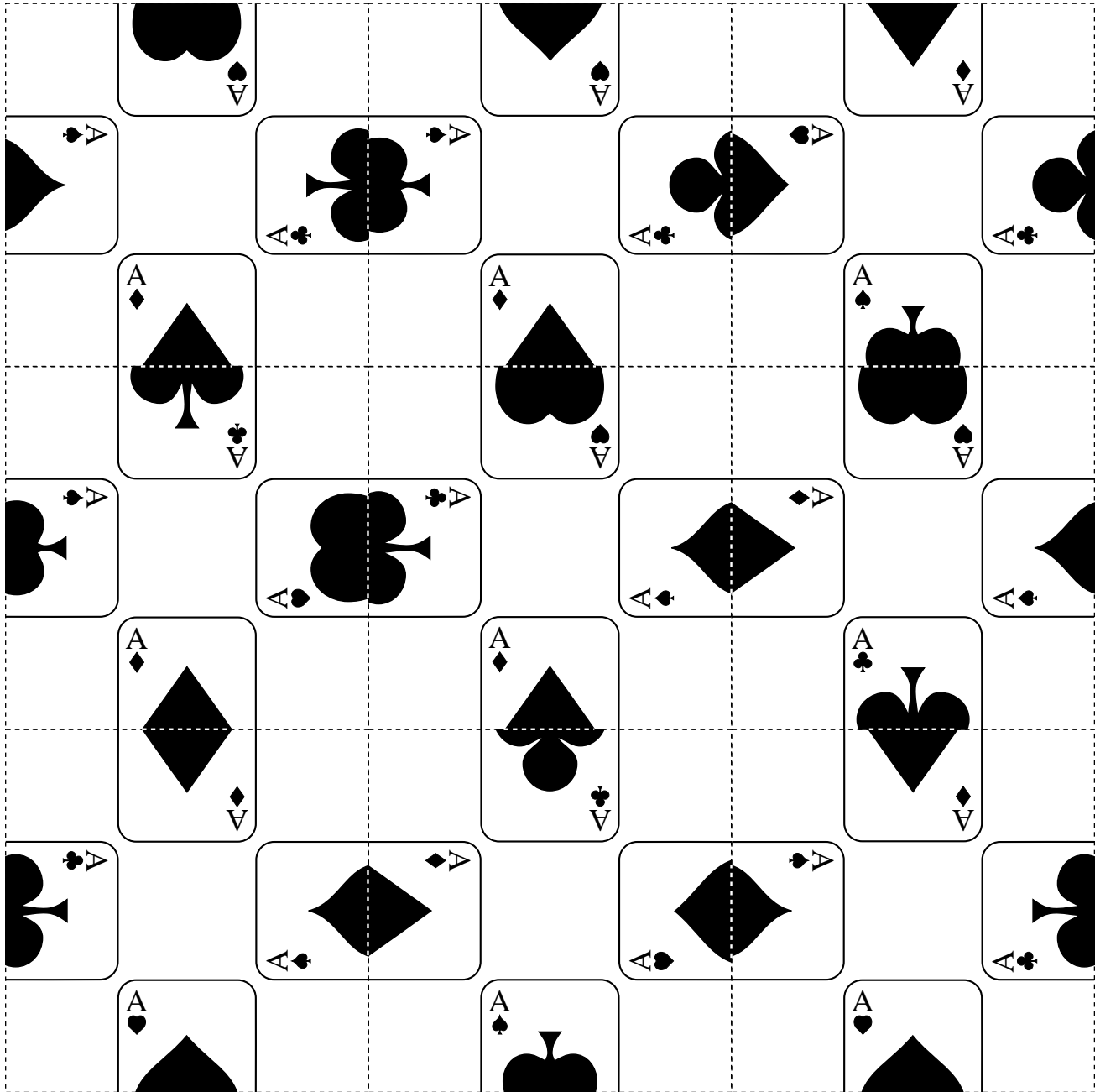


# The *FOUR ACES* Puzzle



## Instructions:

Cut out the 9 squares shown above by cutting along the dotted lines. The object of the puzzle is to take the 9 squares and arrange them into a 3 X 3 square. But there is one catch. The squares have half of a playing card on each edge. As you put one square next to another, you have to make sure that the two adjacent squares have compatible card halves. That is, one of the playing cards shown below must be created by adjacent squares. Good luck.

